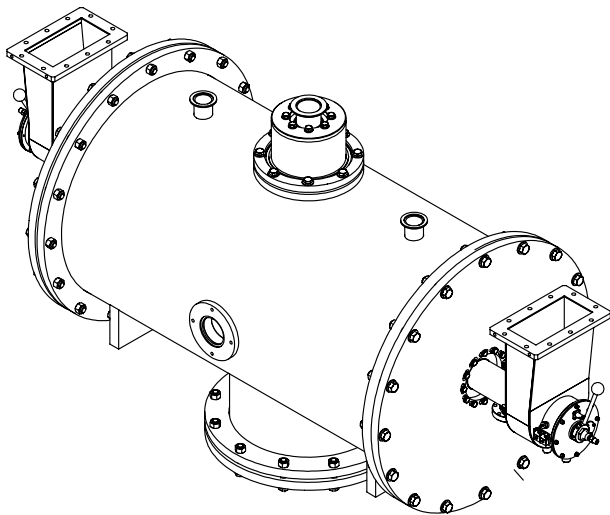
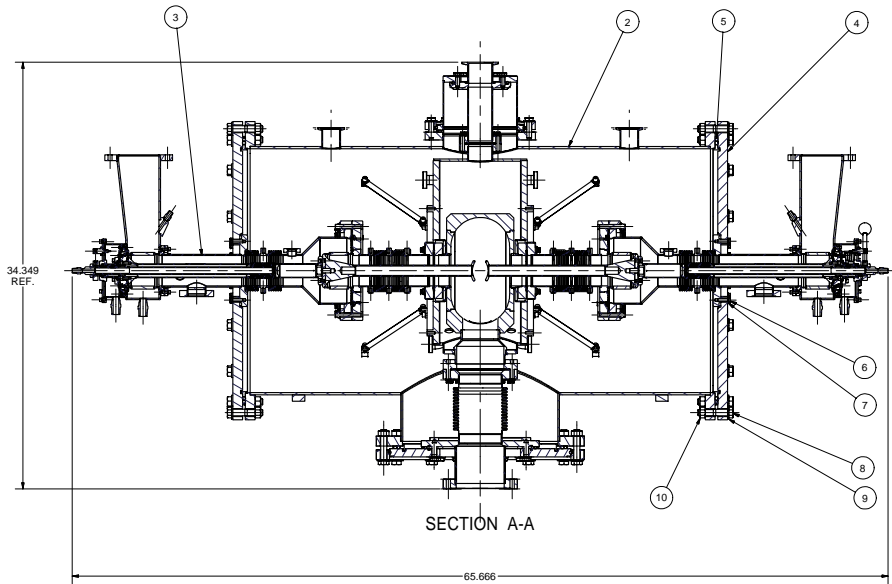
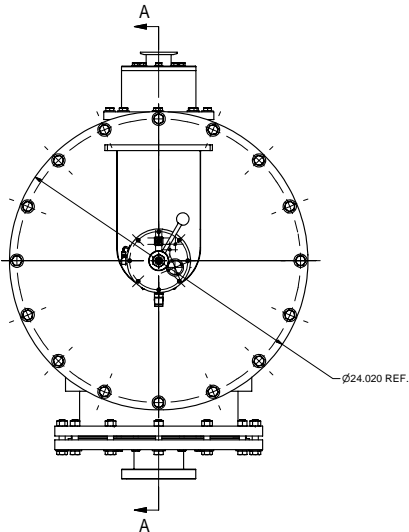


REVISIONS				DATE	APP.
SYM.	ZONE	DESCRIPTION			
A	E4	UPDATED PICTORIAL TO SHOW VIEWPORTS ADDED TO 7102-020		11/16/05	VG



1 NITROGEN CRYOSTAT FOR COUPLERS TESTS

FILE NAME: 7102-021
SHEET NO.: 1
DFT. SCALE: 1:4
MATERIAL:
QTY: 1 REQD
NOTES:


FOR MACHINING LUBRICANT USE ONLY
ALKALINE DETERGENT LUBRICANT CIMSTAR 40
OR EQUIVALENT APPROVED BY CORNELL LEPP

TECHNICAL RESOURCE APPROVALS REQUIRED BEFORE FABRICATION		
	OK	DATE
DRAFTING (JConnelly)		
MACHINE SHOP (Kamrinsk)		
CHEMISTRY (Conklin)		
ELECTRONICS SHOP (Barley)		
FURNACE BRAZING (Sherwood)		
BEAM WELDING (Seep)		
WELDING OTHER (Gallagher)		
UTILITIES INTEGRATION (Gallagher)		
STOCKROOMS (Lockwood)		

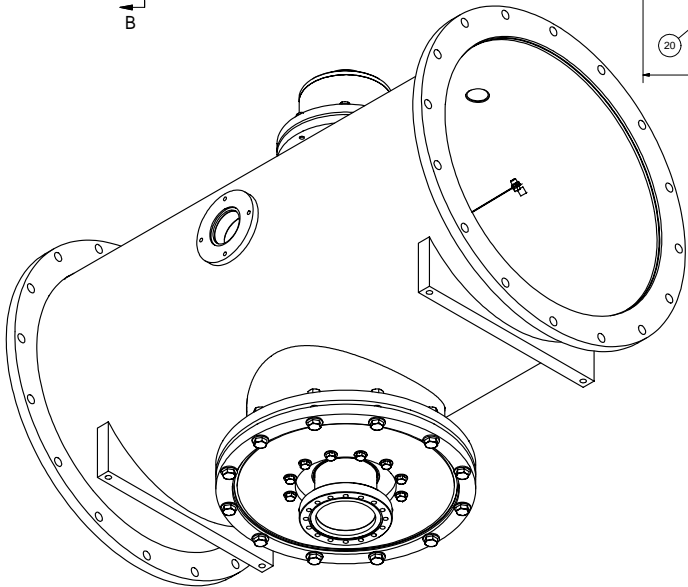
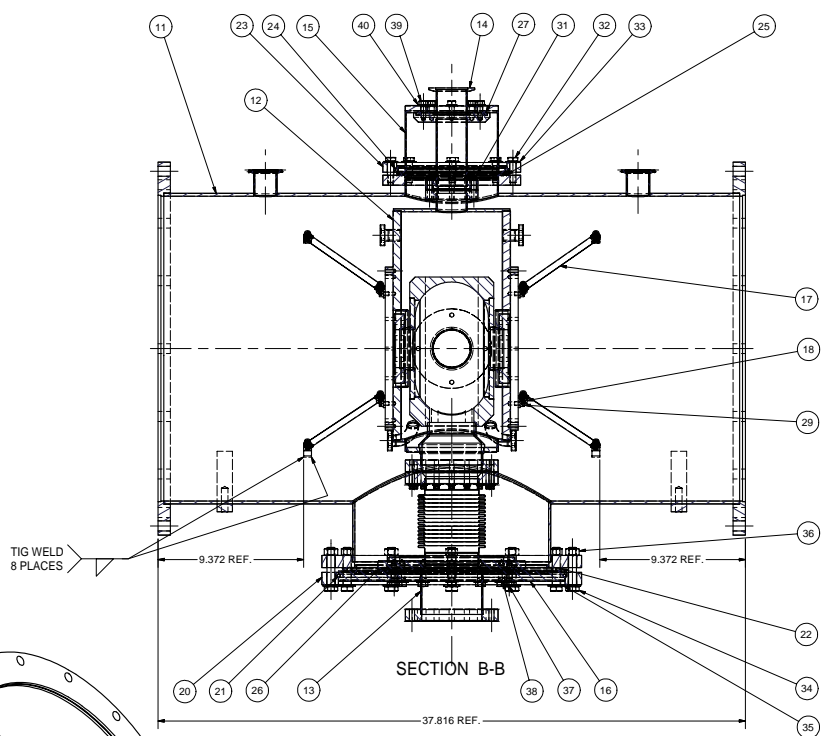
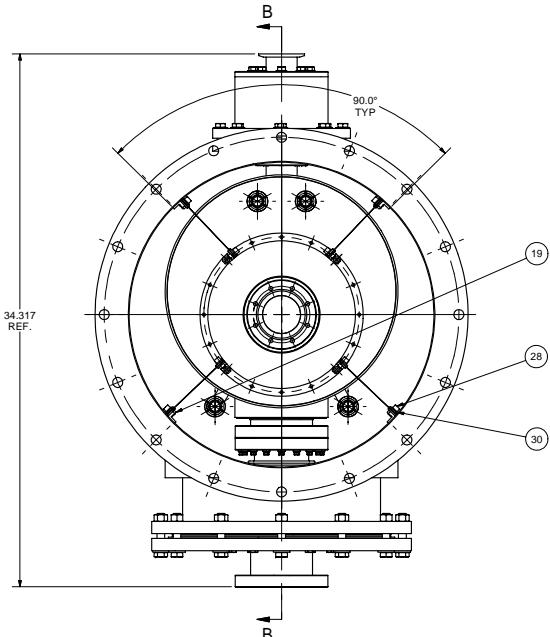
PRINT DISTR.	7102-021
REV.	A

10		Hex Nut ANSI B18.2.2 - 1/2 - 13	32		PURCHASED	8	
9		Washer A (ANSI B18.22.1 - 1/2 - narrow - Type A)	32		PURCHASED	8	
8		Hex Bolt - UNC (ANSI/ASME B18.2.1 - 1/2-13 UNC - 2.5)	32		PURCHASED	8	
7		Washer B (ANSI B18.22.1 - 1/4 - narrow - Type B)	24		PURCHASED	8	
6		Hex Cap Screw ANSI B18.2.1 - 1/4-28 UNF - 0.875	24		PURCHASED	8	
5	ISO LF NW500	SEAL-CENTERING RING	2		PURCHASED		
4	SHEET 8	COUPLER FLANGE	2				
3	7102-003	75 kW CW INPUT COUPLER	2				
2	SHEET 2	LN2 CRYOSTAT W/O COUPLERS, SUB-ASM	1				
1	SHEET 1	LN2 CRYOSTAT FOR COUPLER TESTS	X				
ITEM	DWG. NO.	DESCRIPTION	G1	G2	G3	REMARKS	REV.
			QUANTITY				

PLOT DATE: 11/16/2005
CAD FILE NAME: 7102-021.dwg

UNLESS OTHERWISE SPECIFIED: DIMENSIONS ARE IN INCHES TOLERANCES ON: Ø & R & S DIM & DIM FRACTIONS ± 1/64 ANGLES ± 0.5 ALL SURFACES ✓	 LEPP LABORATORY FOR ELEMENTARY PARTICLE PHYSICS		CORNELL UNIVERSITY Floyd R. Newman Laboratory Ithaca, NY 14853				
			NITROGEN CRYOSTAT FOR COUPLER TEST ASSEMBLY				
			CHECKED BY: VGV	DRAWN BY: VGV	DRAWN FOR: SAB	DATE: 4/19/2005	SCALE: 1:4
			APPROVED BY: VGV				
				D	7102-021 SIN. NO. 1 OF 12	REV. A	

REVISIONS				DATE	APP.
SYM.	ZONE	DESCRIPTION			
A	F8	UPDATED PICTORIAL TO SHOW (4) ELBOW SUB-ASMS & (4) VIEWPORTS ADDED TO 7102-020, 80.0 DEG. TYP WAS 90.0 DEG. JGL		11/16/05	VG



2 CRYOSTAT W/O COUPLERS

FILE NAME: 7102-021
SHEET NO.: 2
DFT. SCALE: 1:4
MATERIAL:
QTY: 1 PER ASM.
NOTES:

40	Washer A (ANSI B18.22.1 - 5/16 - narrow - Type A)	8		PURCHASED	8
39	Hex Bolt - UNC (ANSI/ASME B18.2.1 - 5/16-18 UNC - 0.875)	8		PURCHASED	8
38	Washer A (ANSI B18.22.1 - 3/8 - narrow - Type A)	12		PURCHASED	8
37	Hex Bolt - UNC (ANSI/ASME B18.2.1 - 3/8-16 UNC - 1.25)	12		PURCHASED	8
36	Hex Nut ANSI B18.2.2 - 1/2 - 13	12		PURCHASED	8
35	Washer A (ANSI B18.22.1 - 1/2 - narrow - Type A)	12		PURCHASED	6
34	Hex Cap Screw ANSI B18.2.1 - 1/2-13 UNC - 2.5	12		PURCHASED	8
33	Washer A (ANSI B18.22.1 - 7/16 - narrow - Type A)	8		PURCHASED	8
32	Hex-Head Bolt ISO 4017 - M10 x 35	8		PURCHASED	8
31	Flange 12-Point Screw - UNF (IFI 115 - 5/16 - 24 - 1.34)	24		PURCHASED	9
30	Washer B - ANSI B18.22.1 - 1/4 - narrow - Type B	16		PURCHASED	8
29	Hexagon Socket Head Cap Screw 1/4-20x3/8	8		PURCHASED	8
28	Hexagon Socket Head Cap Screw 1/4-20x1/2	16		PURCHASED	8
27	ISO NW100 SEAL-VITON O-RING	1		PURCHASED	
26	ISO NW200 SEAL-CENTERING RING	1		PURCHASED	
25	ISO NW160 SEAL-CENTERING RING	1		PURCHASED	
24	ISO NW160 RETAINING RING	1		PURCHASED	
23	ISO NW160 ROTATING FLANGE	1		PURCHASED	
22	ISO NW320 SEAL-CENTERING RING	1		PURCHASED	
21	ISO NW320 RETAINING RING	1		PURCHASED	
20	ISO NW320 ROTATING FLANGE	1		PURCHASED	
19	SHEET 10 BRACKET 2	8			
18	SHEET 10 BRACKET 1	8			
17	SHEET 10 STRING BRACKET, SUB-ASM	8			
16	SHEET 8 FLANGE	1			
15	SHEET 5 HOOD, SUB-ASM	1			
14	SHEET 4 LN2 SUPPLY LINE, SUB-ASM	1			
13	SHEET 4 BELLOWS W/ FLANGES, SUB-ASM	1			
12	7102-020 CAVITY WITH NITROGEN VESSEL, SUB-ASM	1			
11	SHEET 3 VACUUM VESSEL, SUB-ASM	1			
2	SHEET 2 CRYOSTAT W/O COUPLERS, SUB-ASM	X			

FOR MACHINING LUBRICANT USE ONLY
ALKALINE DETERGENT LUBRICANT CIMSTAR 40
OR EQUIVALENT APPROVED BY CORNELL LEPP

TECHNICAL RESOURCE APPROVALS REQUIRED BEFORE FABRICATION			
DRAFTING (ICornell):	OK	DATE	N/A
MACHINE SHOP (Karnes):			
CHEMISTRY (Conklin):			
ELECTRONICS SHOP (Barley):			
FURNACE BRAZING (Sherwood):			
BEAM WELDING (Sees):			
WELDING OTHER (Gallagher):			
UTILITIES INTEGRATION (Gallagher):			
STOCKROOMS (Lockwood):			

PRINT DISTR. 7102-021

CR-1

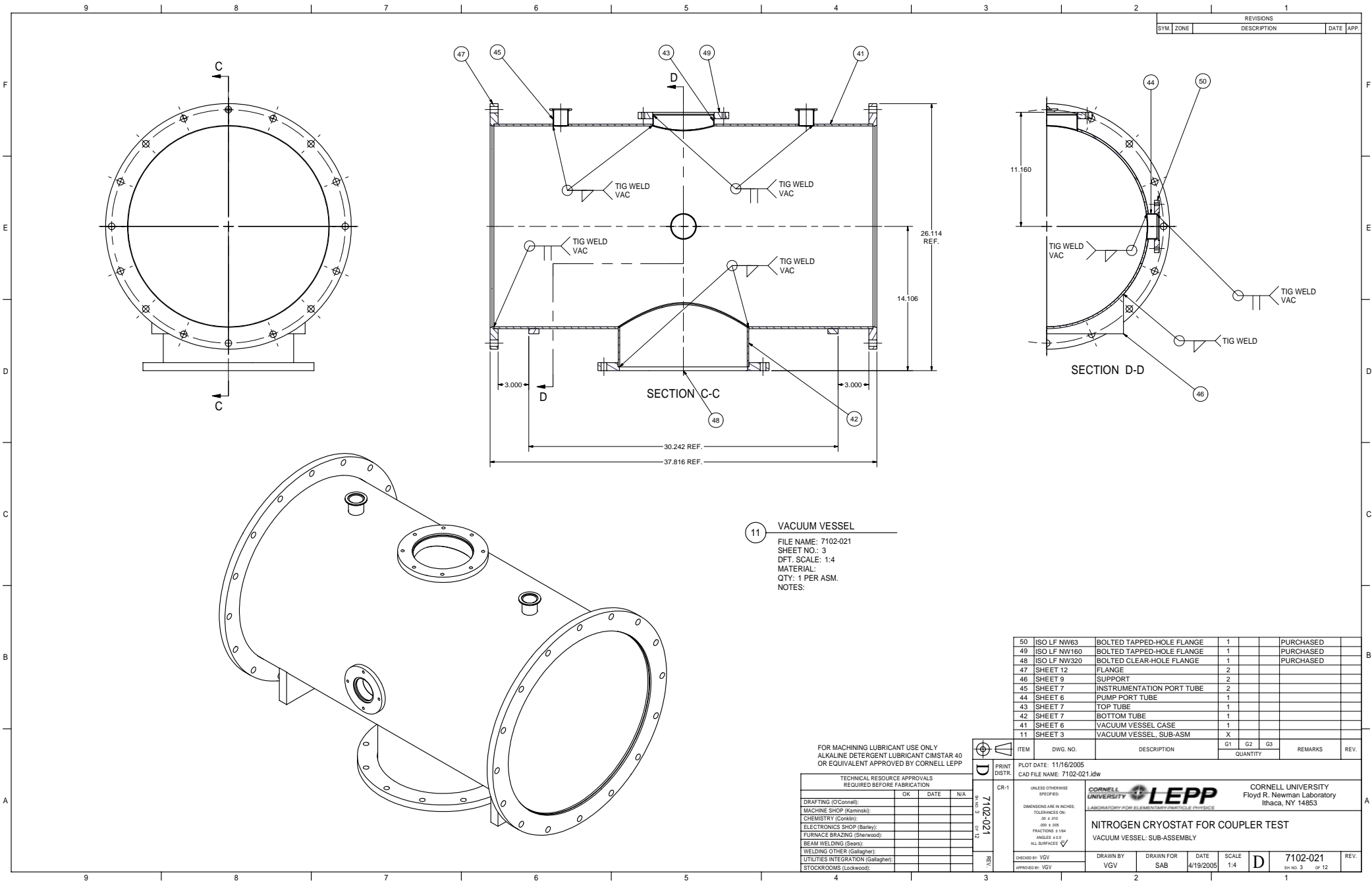
UNLESS OTHERWISE SPECIFIED:
DIMENSIONS ARE IN INCHES
TOLERANCES ON:
H & F
D & S
FRACTIONS ± 1/16
ANGLES ± 0.5
ALL SURFACES

CORNELL UNIVERSITY
LABORATORY FOR ELASTOMERICS & POLYMERS

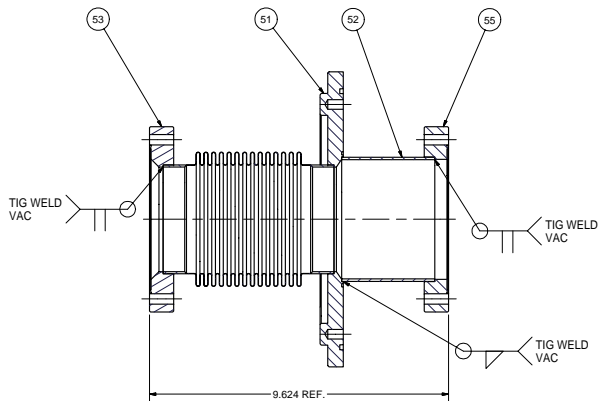
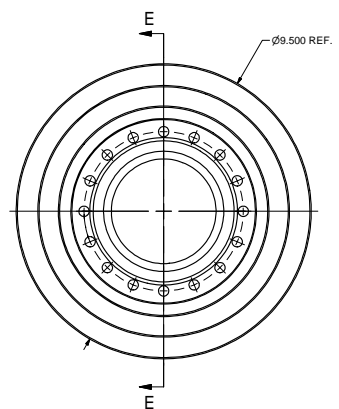
CORNELL UNIVERSITY
Floyd R. Newman Laboratory
Ithaca, NY 14853

NITROGEN CRYOSTAT FOR COUPLER TEST
CRYOSTAT WITHOUT COUPLERS: SUB-ASSEMBLY

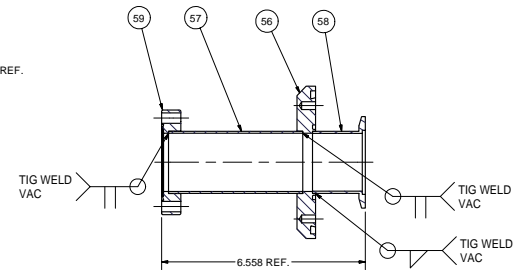
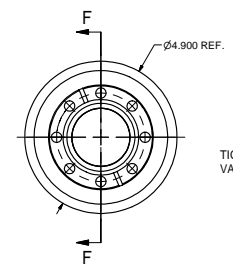
DRAWN BY VGV
DRAWN FOR SAB
DATE 4/19/2005
SCALE 1:4
7102-021
REV. A



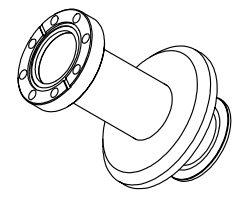
REVISIONS			
SYM.	ZONE	DESCRIPTION	DATE APP.



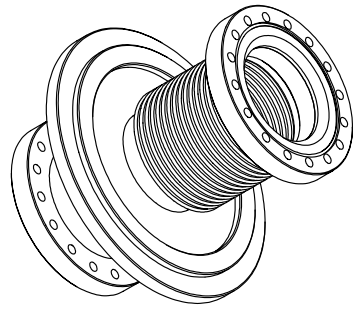
SECTION E-E



SECTION F-F



14 NITROGEN SUPPLY LINE, SUB-ASM
 FILE NAME: 7102-021
 SHEET NO.: 4
 DFT. SCALE: 1:2
 MATERIAL: STN. STL.
 QTY: 1 PER SUB-ASM.
 NOTES:



13 BELLOWS W/ FLANGES, SUB-ASM
 FILE NAME: 7102-021
 SHEET NO.: 4
 DFT. SCALE: 1:2
 MATERIAL: STN. STL.
 QTY: 1 PER SUB-ASM.
 NOTES:

FOR MACHINING LUBRICANT USE ONLY
 ALKALINE DETERGENT LUBRICANT CIMSTAR 40
 OR EQUIVALENT APPROVED BY CORNELL LEPP

TECHNICAL RESOURCE APPROVALS REQUIRED BEFORE FABRICATION			
	OK	DATE	N/A
DRAFTING (ICornell):			
MACHINE SHOP (Karnes):			
CHEMISTRY (Conklin):			
ELECTRONICS SHOP (Barley):			
FURNACE BRAZING (Sherwood):			
BEAM WELDING (Shaw):			
WELDING OTHER (Gallagher):			
UTILITIES INTEGRATION (Gallagher):			
STOCKROOMS (Lockwood):			

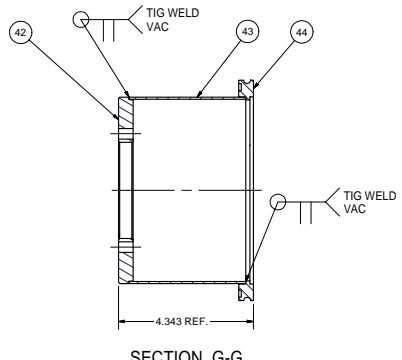
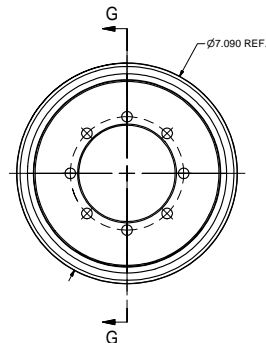
ITEM		DWG. NO.	DESCRIPTION			QUANTITY			REMARKS	REV.
59	SHEET 11		3-3/8 CONFLAT FLANGE		1					
58	SHEET 9		TUBE 3		1					
57	SHEET 9		TUBE 2		1					
56	SHEET 5		FLANGE		1					
14	SHEET 4		LN2 SUPPLY LINE, SUB-ASM		X					
7	bellows3.5				1					
55	F600400		6" CONFLAT FLANGE		1				PURCHASED	
53	SHEET 11		6" CONFLAT FLANGE		1					
52	SHEET 8		PUMP TUBE		1					
51	SHEET 8		FLANGE		1					
13	SHEET 4		BELLOWS W/ FLANGES, SUB-ASM		X					
						G1	G2	G3		

CORNELL UNIVERSITY
 LEPP
 LABORATORY FOR ELEMENTARY PARTICLE PHYSICS
 CORNELL UNIVERSITY
 Floyd R. Newman Laboratory
 Ithaca, NY 14853

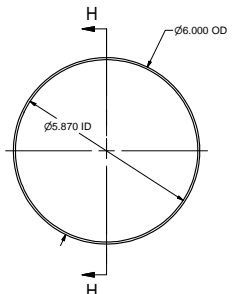
NITROGEN CRYOSTAT FOR COUPLER TEST
 SUB-ASSEMBLIES

DRAWN BY	DRAWN FOR	DATE	SCALE	D	7102-021	REV.
GVG	SAB	4/19/2005	1:2		SH NO. 4 OF 12	

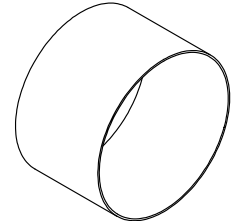
REVISIONS				DATE	APP.
SYM.	ZONE	DESCRIPTION			



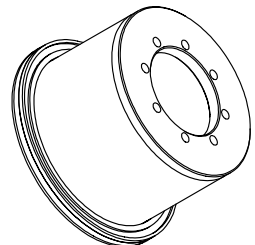
SECTION G-G



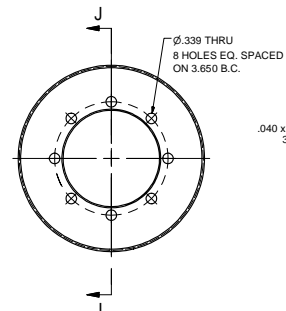
SECTION H-H



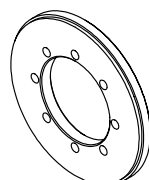
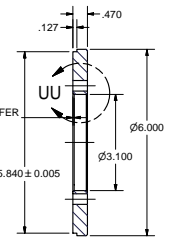
61 TUBE
FILE NAME: 7102-021
SHEET NO.: 5
DFT. SCALE: 1:2
MATERIAL: 304 STN. STL. (6" x .065" TUBING)
QTY: 1 PER SUB-ASM.
NOTES:



15 HOOD, SUB-ASM
FILE NAME: 7102-021
SHEET NO.: 5
DFT. SCALE: 1:2
MATERIAL: STN. STL.
QTY: 1 PER SUB-ASM.
NOTES:

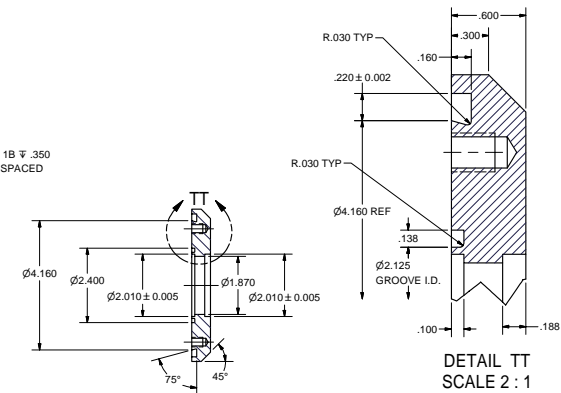
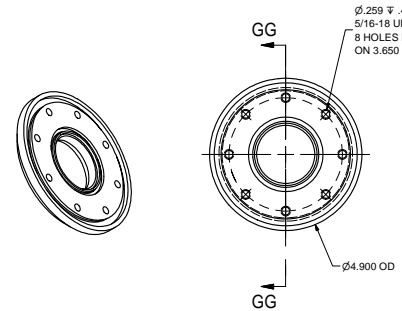
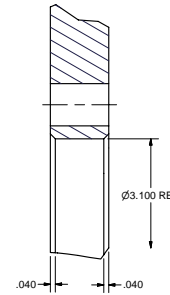


SECTION J-J



60 FLANGE
FILE NAME: 7102-021
SHEET NO.: 5
DFT. SCALE: 1:2
MATERIAL: 304 STN. STL.
QTY: 1 PER SUB-ASM.
NOTES:

DETAIL UU
SCALE 2 : 1



SECTION GG-GG

DETAIL TT
SCALE 2 : 1

56 FLANGE
FILE NAME: 7102-021
SHEET NO.: 5
DFT. SCALE: 1:2
MATERIAL: 304 STN. STL.
QTY: 1 PER SUB-ASM.
NOTES:

FOR MACHINING LUBRICANT USE ONLY
ALKALINE DETERGENT LUBRICANT CIMSTAR 40
OR EQUIVALENT APPROVED BY CORNELL LEPP

TECHNICAL RESOURCE APPROVALS REQUIRED BEFORE FABRICATION			
	OK	DATE	N/A
DRAFTING (ICornell):			
MACHINE SHOP (Karnes):			
CHEMISTRY (Cornell):			
ELECTRONICS SHOP (Barley):			
FURNACE BRAZING (Sherwood):			
BEAM WELDING (Shaw):			
WELDING OTHER (Gallagher):			
UTILITIES INTEGRATION (Gallagher):			
STOCKROOMS (Lockwood):			

PRINT
DISTR.
7102-021

ITEM	DWG. NO.	DESCRIPTION	QUANTITY	REMARKS	REV.
44	ISO LF NW160	FLANGE, BORED	1		PURCHASED
43	SHEET 7	TUBE	1		
42	SHEET 7	FLANGE	1		
10	SHEET 5	HOOD, SUB-ASM	X		

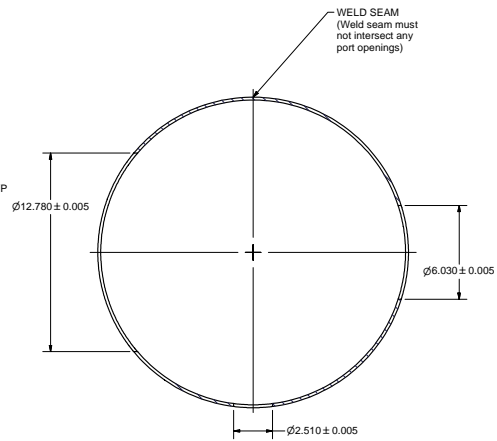
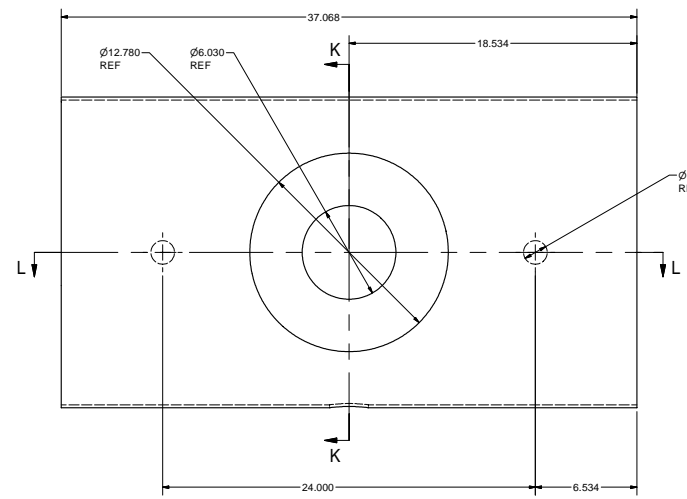
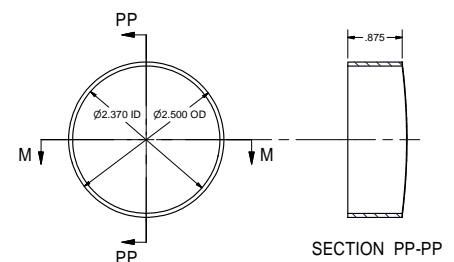
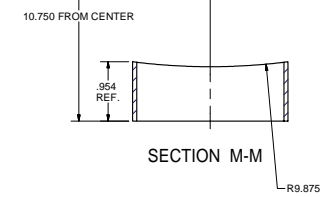
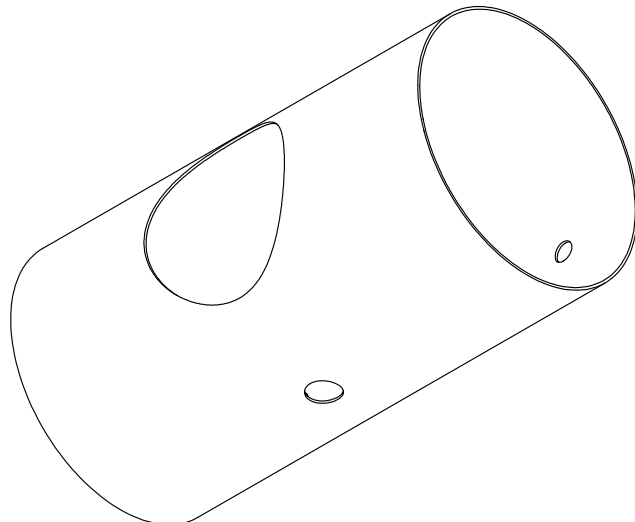
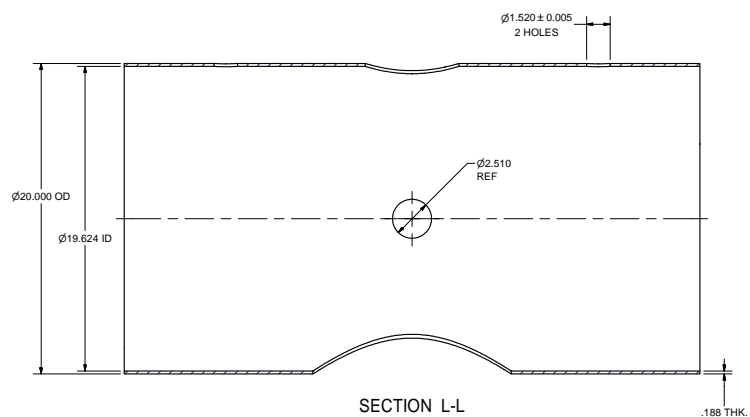
PLOT DATE: 11/16/2005
CAD FILE NAME: 7102-021.dwg

CORNELL UNIVERSITY
LABORATORY FOR ELEMENTARY PARTICLE PHYSICS
LEPP
CORNELL UNIVERSITY
Floyd R. Newman Laboratory
Ithaca, NY 14853

NITROGEN CRYOSTAT FOR COUPLER TEST
HOOD: SUB-ASSEMBLY AND DETAILS

CHECKED BY: VGV
APPROVED BY: VGV
DRAWN BY: VGV
DRAWN FOR: SAB
DATE: 4/19/2005
SCALE: 1:2
D
7102-021
SHEET NO. 5 OF 12
REV.

REVISIONS				DATE	APP.
SYM.	ZONE	DESCRIPTION			
A	A7	Added material note for part #7. Removed rolled/welded note for part #7.		11/8/05	TIO

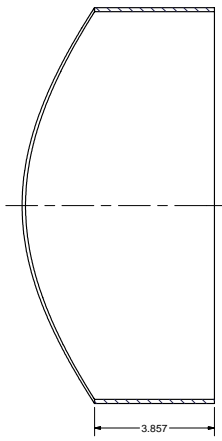


44 PUMP PORT TUBE
 FILE NAME: 7102-021
 SHEET NO.: 6
 DFT. SCALE: 2:1
 MATERIAL: 304 STN. STL. (2.5" x .065" TUBING)
 QTY: 1 PER SUB-ASM.
 NOTES:

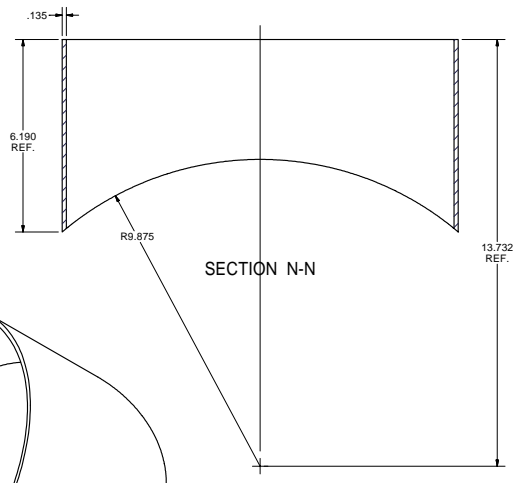
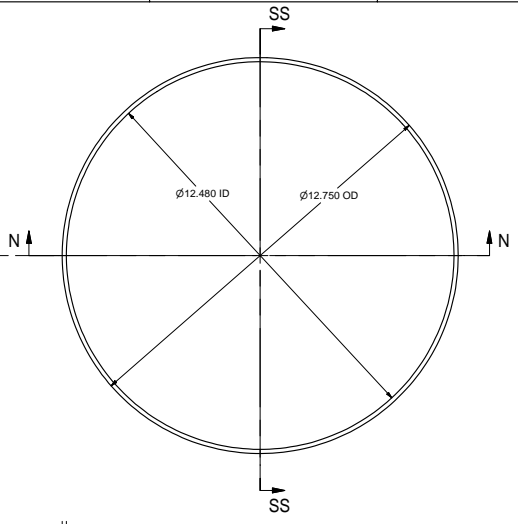
41 VAC VESSEL CASE
 FILE NAME: 7102-021
 SHEET NO.: 6
 DFT. SCALE: 1:4
 MATERIAL: 304 STN. STL. - PROVIDED BY CU-LEPP
 QTY: 1 PER SUB-ASM.
 NOTES:

FOR MACHINING LUBRICANT USE ONLY
 ALKALINE DETERGENT LUBRICANT CIMSTAR 40
 OR EQUIVALENT APPROVED BY CORNELL LEPP

ITEM	DWG. NO.	DESCRIPTION	G1	G2	G3	REMARKS	REV.
			QUANTITY				
PRINT DATE: 11/16/2005 CAD FILE NAME: 7102-021.dwg CR-1 UNLESS OTHERWISE SPECIFIED: DIMENSIONS ARE IN INCHES: TOLERANCES ON: .00 ± .010 .010 ± .005 FRACTIONS ± 1/16 ANGLES ± 0.5° ALL SURFACES: ✓							
CORNELL UNIVERSITY LABORATORY FOR ELEMENTARY PARTICLE PHYSICS LEPP CORNELL UNIVERSITY Floyd R. Newman Laboratory Ithaca, NY 14853							
NITROGEN CRYOSTAT FOR COUPLER TEST PARTS OF VACUUM VESSEL							
CHECKED BY: VGV		DRAWN BY: VGV		DATE: 4/19/2005		SCALE: D	7102-021 SH. NO. 6 OF 12
APPROVED BY: VGV							REV. A



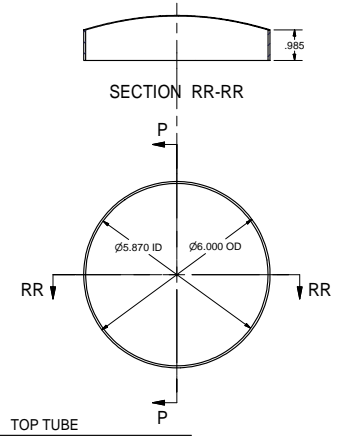
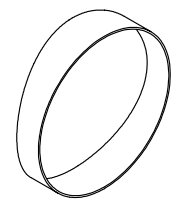
SECTION SS-SS



SECTION N-N

42 BOTTOM TUBE

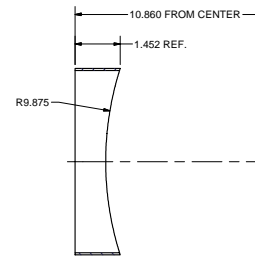
FILE NAME: 7102-021
SHEET NO.: 7
DFT. SCALE: 1:2
MATERIAL: 304 STN. STL.
QTY: 1 PER SUB-ASM.
NOTES:



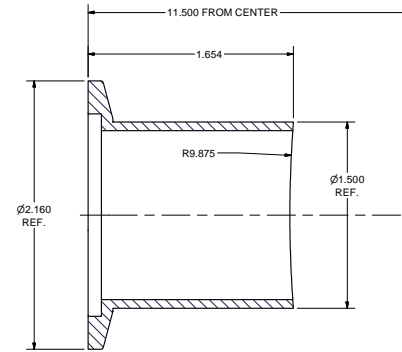
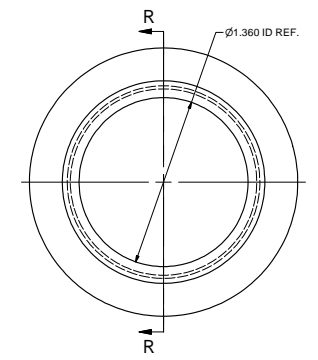
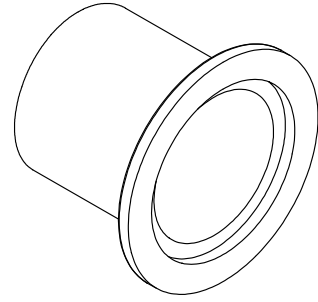
SECTION RR-RR

43 TOP TUBE

FILE NAME: 7102-021
SHEET NO.: 7
DFT. SCALE: 1:2
MATERIAL: 304 STN. STL. (6" O.D. x .065" WALL)
QTY: 1 PER SUB-ASM.
NOTES:



SECTION P-P



SECTION R-R

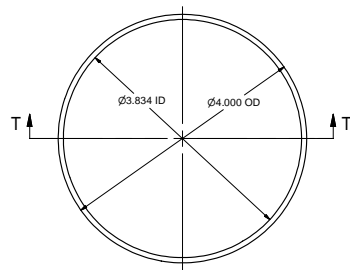
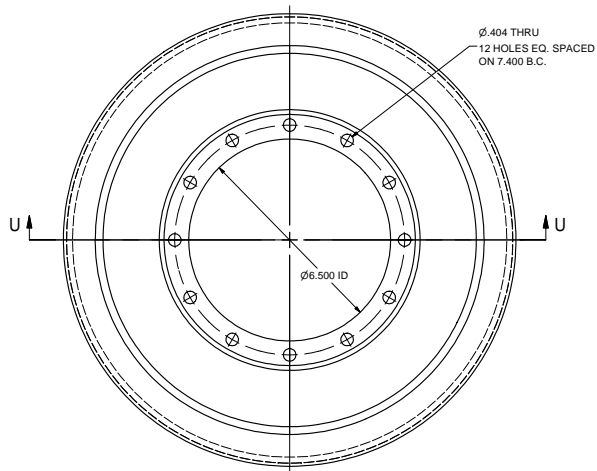
45 INSTRUMENTATION PORT TUBE

FILE NAME: 7102-021
SHEET NO.: 7
DFT. SCALE: 2:1
MATERIAL: 304 STN. STL. (PURCHASED VARIAN KS400150175)
QTY: 2 PER SUB-ASM.
NOTES:

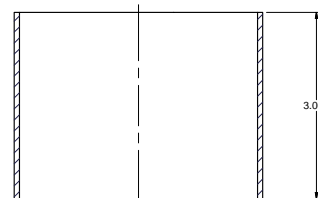
FOR MACHINING LUBRICANT USE ONLY
ALKALINE DETERGENT LUBRICANT CIMSTAR 40
OR EQUIVALENT APPROVED BY CORNELL LEPP

ITEM	DWG. NO.	DESCRIPTION	QUANTITY			REMARKS	REV.
			G1	G2	G3		
7102-021		NITROGEN CRYOSTAT FOR COUPLER TEST TUBES					
<p>PRINT DATE: 11/16/2005 CAD FILE NAME: 7102-021.dwg</p> <p>CORNELL UNIVERSITY FLOYD R. NEWMAN LABORATORY ITHACA, NY 14853</p>							
<p>UNLESS OTHERWISE SPECIFIED: DIMENSIONS ARE IN INCHES TOLERANCES ON: Ø .010 HOLE & Ø .010 FRACTIONS ± .100 ANGLES ± 0.5° ALL SURFACES ✓</p>							
CHECKED BY: VGV	DRAWN FOR: VGV		DATE: 4/19/2005		SCALE: 1:2		7102-021 SH NO. 7 OF 12
APPROVED BY: VGV	DRAWN FOR: SAB		DATE: 4/19/2005		SCALE: 1:2		7102-021 SH NO. 7 OF 12

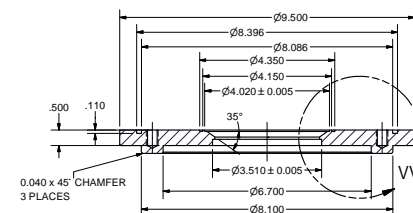
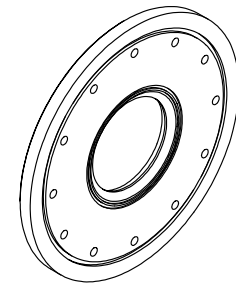
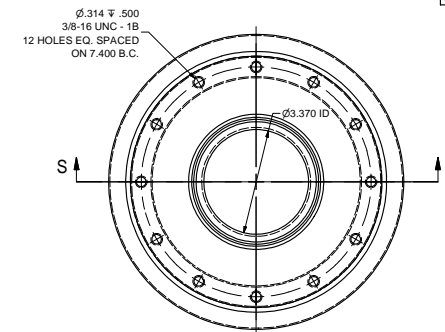
REVISIONS			DATE	APP.
SYM.	ZONE	DESCRIPTION		



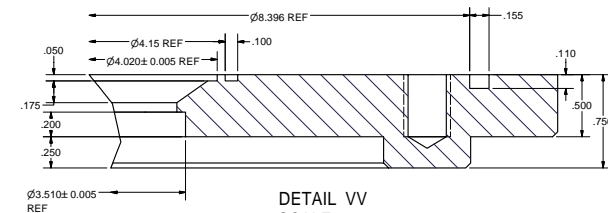
SCALE 1 : 1



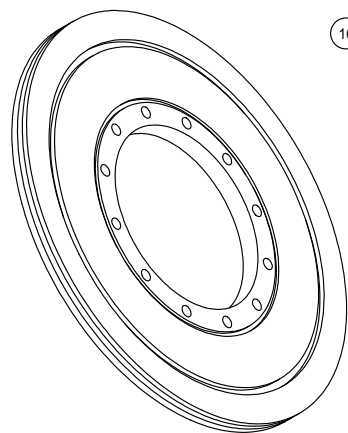
SECTION T-T
SCALE 1 : 1



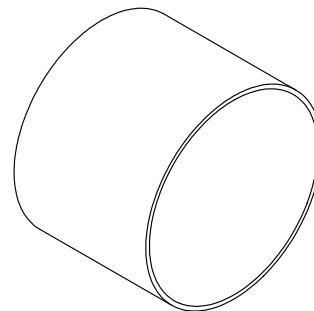
SECTION S-S



DETAIL VV
SCALE 2 : 1



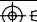

16 FLANGE
FILE NAME: 7102-021
SHEET NO.: 8
DFT. SCALE: 1:2
MATERIAL: STN. STL. (PURCHASE ISO NW320 BLANK)
QTY: 1 PER SUB-ASM.
NOTES:



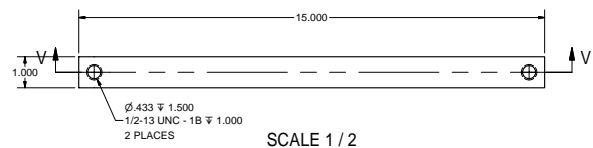
52 PUMP TUBE
FILE NAME: 7102-021
SHEET NO.: 8
DFT. SCALE: 1:1
MATERIAL: 304 STN. STL. (4" x .065" TUBING)
QTY: 1 PER SUB-ASM.
NOTES:

FOR MACHINING LUBRICANT USE ONLY
ALKALINE DETERGENT LUBRICANT CIMSTAR 40
OR EQUIVALENT APPROVED BY CORNELL LEPP

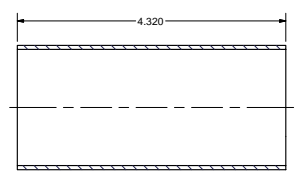
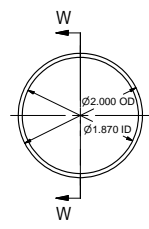
51 FLANGE
FILE NAME: 7102-021
SHEET NO.: 8
DFT. SCALE: 1:2
MATERIAL: 304 STN. STL.
QTY: 1 PER SUB-ASM.
NOTES:

	ITEM	DWG. NO.	DESCRIPTION	G1	G2	G3	REMARKS	REV.
	QUANTITY							
PRINT DISTR.	PLOT DATE: 11/16/2005 CAD FILE NAME: 7102-021.dwg							
D 7102-021 SH. NO. 8 OF 12	CR-1	UNLESS OTHERWISE SPECIFIED DIMENSIONS ARE IN INCHES TOLERANCES ON: .06 & .030 FRACTIONS > .100 ANGLES < 90° ALL SURFACES: ✓	 LABORATORY FOR ELEMENTARY PARTICLE PHYSICS		CORNELL UNIVERSITY Floyd R. Newman Laboratory Ithaca, NY 14853			
	NITROGEN CRYOSTAT FOR COUPLER TEST							
	FLANGES AND TUBE							
	REV.	DRAWN BY: YGV CHECKED BY: ✓	DRAWN BY YGV	DRAWN FOR SAB	DATE 4/19/2005	SCALE 1:2	D	7102-021 SH. NO. 12 OF 12

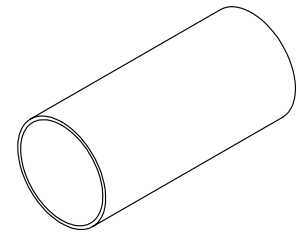
REVISIONS				DATE	APP.
SYM.	ZONE	DESCRIPTION			



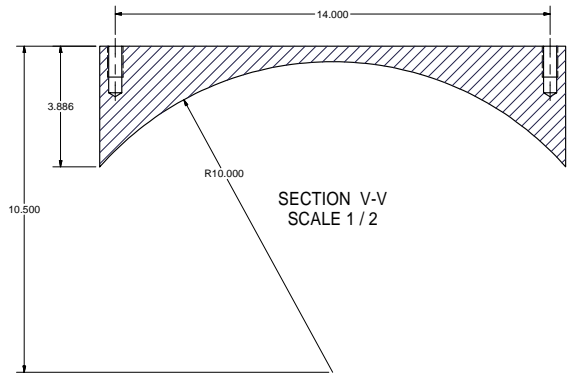
SCALE 1 / 2



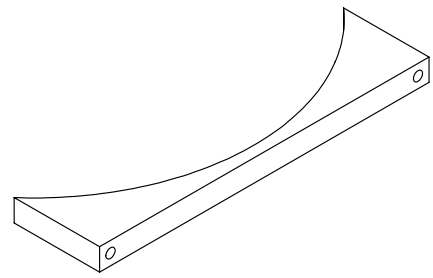
SECTION W-W



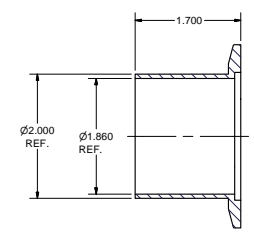
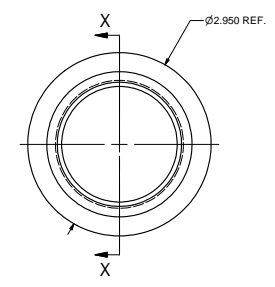
57 TUBE 2
 FILE NAME: 7102-021
 SHEET NO.: 9
 DFT. SCALE: 1:1
 MATERIAL: 304 STN. STL. (2" x .065" TUBING)
 QTY: 1 PER SUB-ASM.
 NOTES:



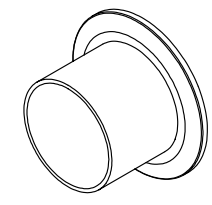
SECTION V-V
SCALE 1 / 2



46 SUPPORT
 FILE NAME: 7102-021
 SHEET NO.: 9
 DFT. SCALE: 1:2
 MATERIAL: 304 STN. STL.
 QTY: 2 PER SUB-ASM.
 NOTES:



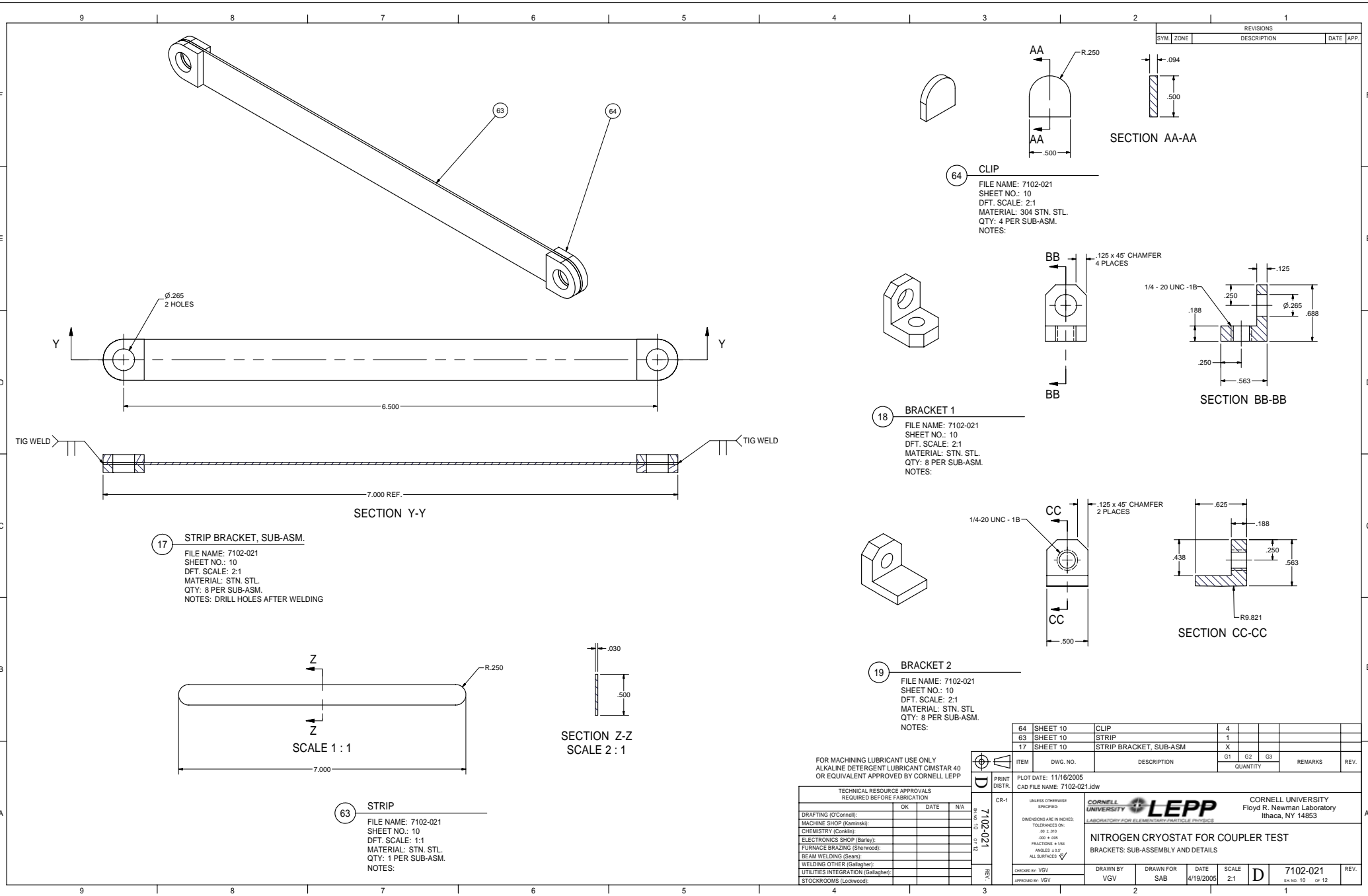
SECTION X-X



58 TUBE 3
 FILE NAME: 7102-021
 SHEET NO.: 9
 DFT. SCALE: 1:1
 MATERIAL: 304 STN. STL. (PURCHASED VARIAN KS500200169)
 QTY: 1 PER SUB-ASM.
 NOTES:

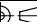
FOR MACHINING LUBRICANT USE ONLY
 ALKALINE DETERGENT LUBRICANT CIMSTAR 40
 OR EQUIVALENT APPROVED BY CORNELL LEPP

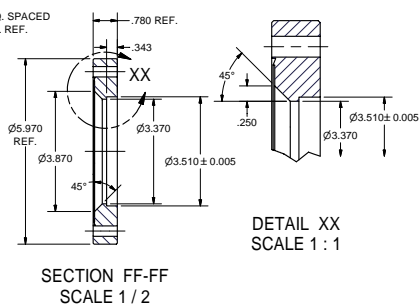
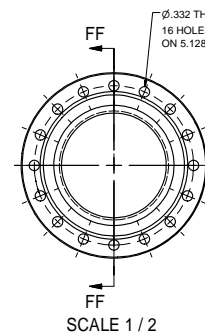
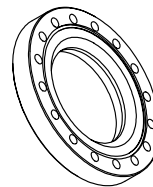
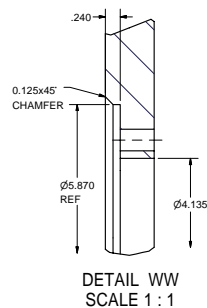
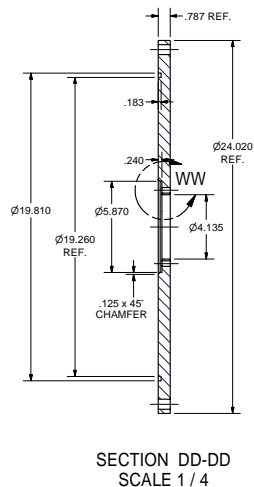
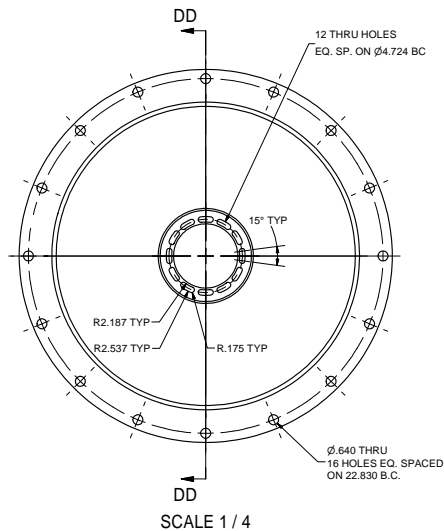
ITEM	DWG. NO.	DESCRIPTION	G1	G2	G3	REMARKS	REV.	
			QUANTITY					
PRINT DISTR.	7102-021	PLOT DATE: 11/16/2005 CAD FILE NAME: 7102-021.dwg UNLESS OTHERWISE SPECIFIED: DIMENSIONS ARE IN INCHES: TOLERANCES ON: ϕ $\pm .010$ HOLE $\pm .010$ FRACTIONS $\pm .100$ ANGLES $\pm 0.5^\circ$ ALL SURFACES <input checked="" type="checkbox"/>	CORNELL UNIVERSITY LEPP LABORATORY FOR ELEMENTARY PARTICLE PHYSICS			CORNELL UNIVERSITY Floyd R. Newman Laboratory Ithaca, NY 14853		
NITROGEN CRYOSTAT FOR COUPLER TEST TUBES AND SUPPORT								
CHECKED BY: VGV	DRAWN BY: VGV	DRAWN FOR: SAB	DATE: 4/19/2005	SCALE: D	7102-021		REV.	
APPROVED BY: VGV					SH. NO. 9 OF 12			



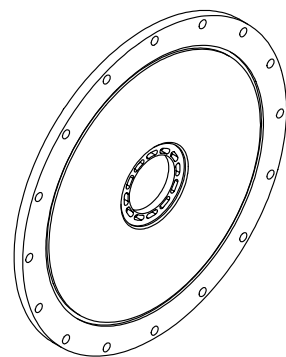
FOR MACHINING LUBRICANT USE ONLY
ALKALINE DETERGENT LUBRICANT CIMSTAR 40
OR EQUIVALENT APPROVED BY CORNELL LEPP

TECHNICAL RESOURCE APPROVALS REQUIRED BEFORE FABRICATION			
	OK	DATE	N/A
DRAFTING (OConnell)			
MACHINE SHOP (Kamrinsk)			
CHEMISTRY (Conklin)			
ELECTRONICS SHOP (Barley)			
FURNACE BRAZING (Sherwood)			
BEAM WELDING (Shen)			
WELDING OTHER (Gallagher)			
UTILITIES INTEGRATION (Gallagher)			
STOCKROOMS (Lockwood)			

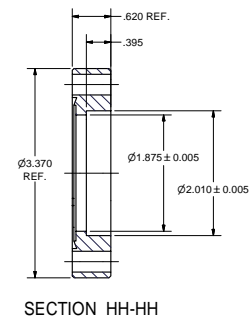
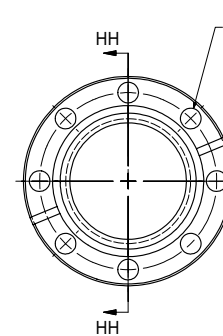
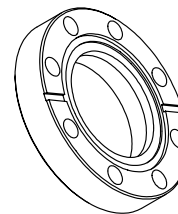
 D	ITEM	DWG. NO.	DESCRIPTION			G1	G2	G3	REMARKS	REV.			
	PLOT DATE: 11/16/2005 CAD FILE NAME: 7102-021.dwg					QUANTITY							
	PRINT DISTR.												
	CR-1	<div>UNLESS OTHERWISE SPECIFIED: DIMENSIONS ARE IN INCHES TOLERANCES ON: Ø > .010 DIM > .010 FRACTIONS > 1/16 ANGLES > 0.5° ALL SURFACES: ✓</div>					<div>CORNELL UNIVERSITY LABORATORY FOR ELEMENTARY PARTICLE PHYSICS LEPP NITROGEN CRYOSTAT FOR COUPLER TEST BRACKETS: SUB-ASSEMBLY AND DETAILS</div>						
7102-021 SH NO. 10 OF 12		CORNELL UNIVERSITY Floyd R. Newman Laboratory Ithaca, NY 14853											
REV.	CHECKED BY: VGV APPROVED BY: VGV		DRAWN BY VGW		DRAWN FOR SAB		DATE 4/19/2005		SCALE 2:1		D	7102-021 SH NO. 10 OF 12	REV.



- 53 6" CONFLAT FLANGE
- FILE NAME: 7102-021
SHEET NO.: 11
DFT. SCALE: 1:2
MATERIAL: 304 STN. STL. PURCHASED MDC F600400 OR EQUIV.
QTY: 1 PER SUB-ASM.
NOTES:





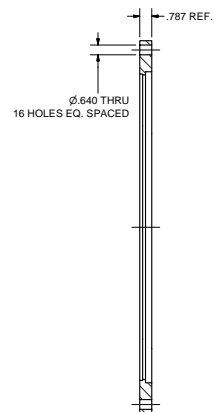
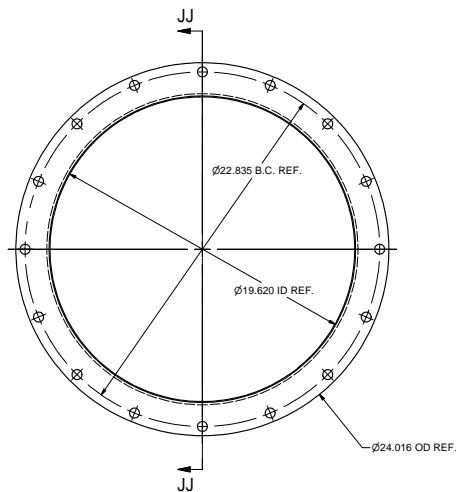
- 4 COUPLER FLANGE
- FILE NAME: 7102-021
SHEET NO.: 11
DFT. SCALE: 1:4
MATERIAL: 304 STN. STL. PURCHASED ISO NW500 BOLTED BLANK
QTY: 2 PER ASM.
NOTES:



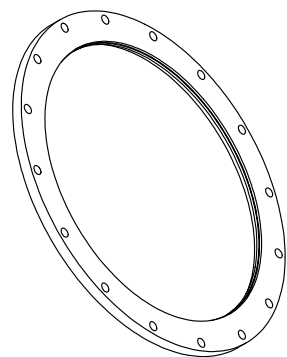
- 59 3-3/8" CONFLAT FLANGE
- FILE NAME: 7102-021
SHEET NO.: 11
DFT. SCALE: 1:1
MATERIAL: 304 STN. STL. PURCHASED MDC F338200 OR EQUIV.
QTY: 1 PER SUB-ASM.
NOTES:

FOR MACHINING LUBRICANT USE ONLY
ALKALINE DETERGENT LUBRICANT CIMSTAR 40
OR EQUIVALENT APPROVED BY CORNELL LEPP

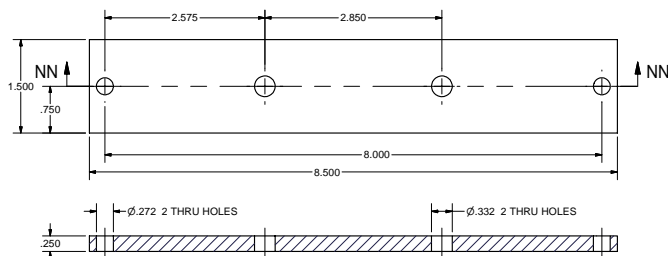
	ITEM	DWG. NO.	DESCRIPTION	G1	G2	G3	REMARKS	REV
				QUANTITY				
D	PRINT DISTR.	PLOT DATE: 11/16/2005 CAD FILE NAME: 7102-021.dwg						
7102-021 <small>SH NO. 11 OF 12</small>	CR-1	UNLESS OTHERWISE SPECIFIED: DIMENSIONS ARE IN INCHES: TOLERANCES ON: .00 ± .010 .000 ± .005 FRACTIONS ± .104 ANGLES ± 0.5° ALL SURFACES ✓				CORNELL UNIVERSITY Floyd R. Newman Laboratory Ithaca, NY 14853		
REV.				NITROGEN CRYOSTAT FOR COUPLER TEST FLANGES				
</								



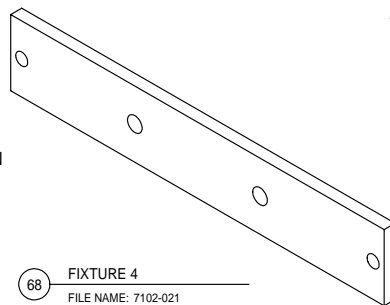
SECTION JJ-JJ



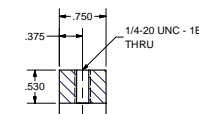
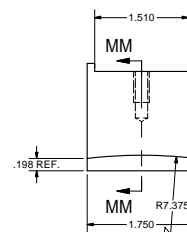
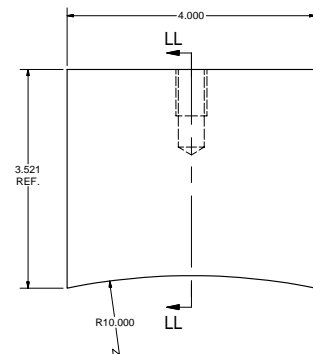
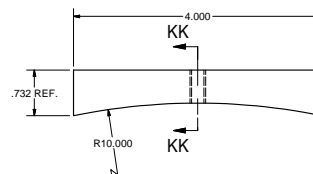
- 47 FLANGE
 FILE NAME: 7102-021
 SHEET NO.: 12
 DFT. SCALE: 1:4
 MATERIAL: 304 STN. STL. PURCHASED ISO NW500 BOLTED BORED
 QTY: 2 PER ASM.
 NOTES:



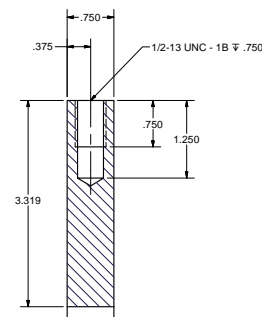
SECTION NN-NN



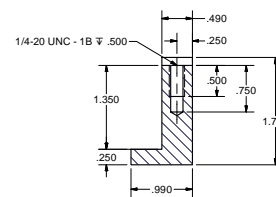
- 68 FIXTURE 4
 FILE NAME: 7102-021
 SHEET NO.: 12
 DFT. SCALE: 1:1
 MATERIAL: ALUMINUM
 QTY: 1 PER ASM.
 NOTES:



SECTION KK-KK



SECTION LL-LL



SECTION MM-MM

- 65 FIXTURE 1
 FILE NAME: 7102-021
 SHEET NO.: 12
 DFT. SCALE: 1:1
 MATERIAL: ALUMINUM
 QTY: 2 PER ASM.
 NOTES:

- 66 FIXTURE 2
 FILE NAME: 7102-021
 SHEET NO.: 12
 DFT. SCALE: 1:1
 MATERIAL: ALUMINUM
 QTY: 2 PER ASM.
 NOTES:

- 67 FIXTURE 3
 FILE NAME: 7102-021
 SHEET NO.: 12
 DFT. SCALE: 1:1
 MATERIAL: ALUMINUM
 QTY: 2 PER ASM.
 NOTES:

FOR MACHINING LUBRICANT USE ONLY
 ALKALINE DETERGENT LUBRICANT CIMSTAR 40
 OR EQUIVALENT APPROVED BY CORNELL LEPP

ITEM	DWG. NO.	DESCRIPTION	REVISIONS			REMARKS	REV.
			SYM.	ZONE	DATE		
7102-021	CR-1	UNLESS OTHERWISE SPECIFIED: DIMENSIONS ARE IN INCHES TOLERANCES ON: .06 & .030 .000 & .005 FRACTIONS > .100 ANGLES & R.F. ALL SURFACES ✓					
CORNELL UNIVERSITY LABORATORY FOR ELEMENTARY PARTICLES LEPP CORNELL UNIVERSITY Floyd R. Newman Laboratory Ithaca, NY 14853							
NITROGEN CRYOSTAT FOR COUPLER TEST PART DETAILS							
CHECKED BY: VGV	DRAWN FOR: VGV	DATE: 4/19/2005	SCALE: D	7102-021	REV.		
APPROVED BY: VGV	DRAWN FOR: SAB	DATE: 4/19/2005	SCALE: D	7102-021	REV.		